

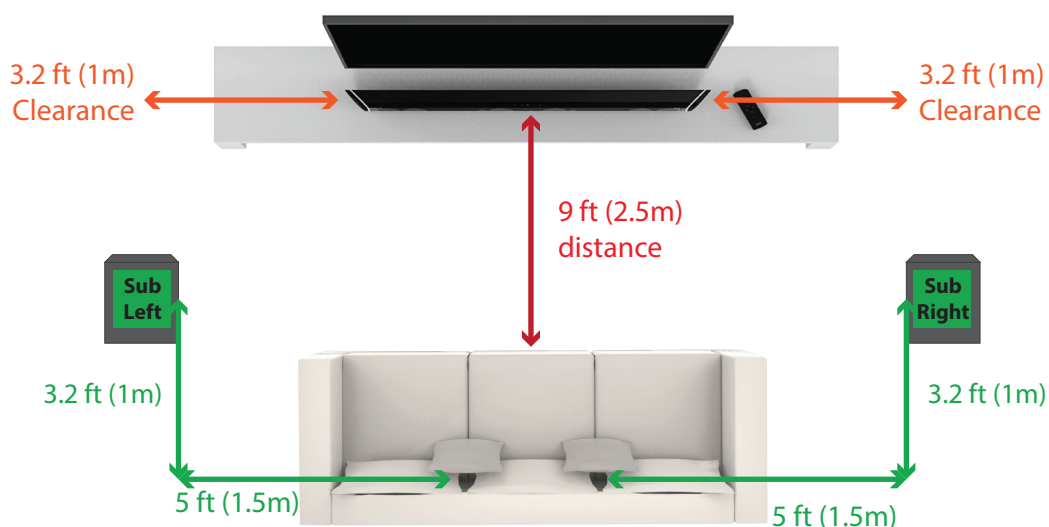
SETTING UP YOUR HOME THEATER

SHOCKWAVE ULTRA 9.2

dts X™

1a. Soundbar & Subwoofer placement

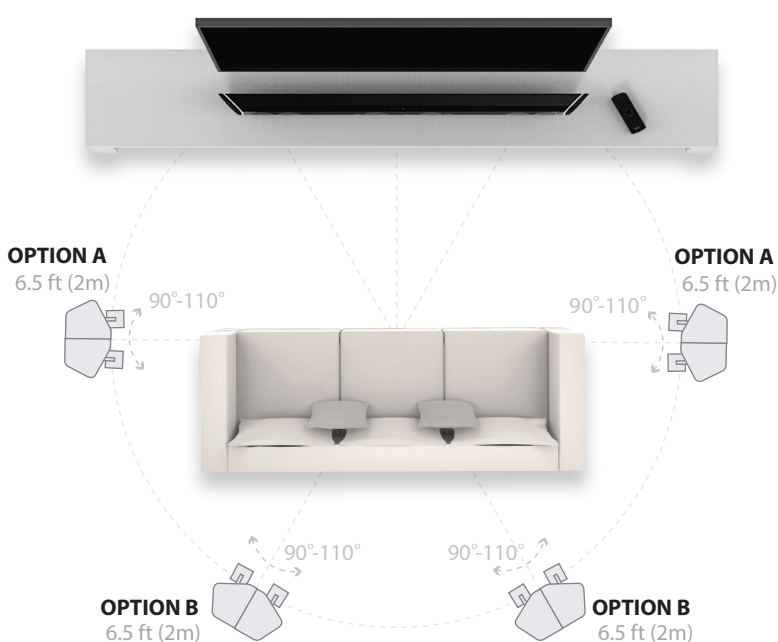
Recommended distance. Can be more or less based on different room sizes.



1b. Surround speakers placement

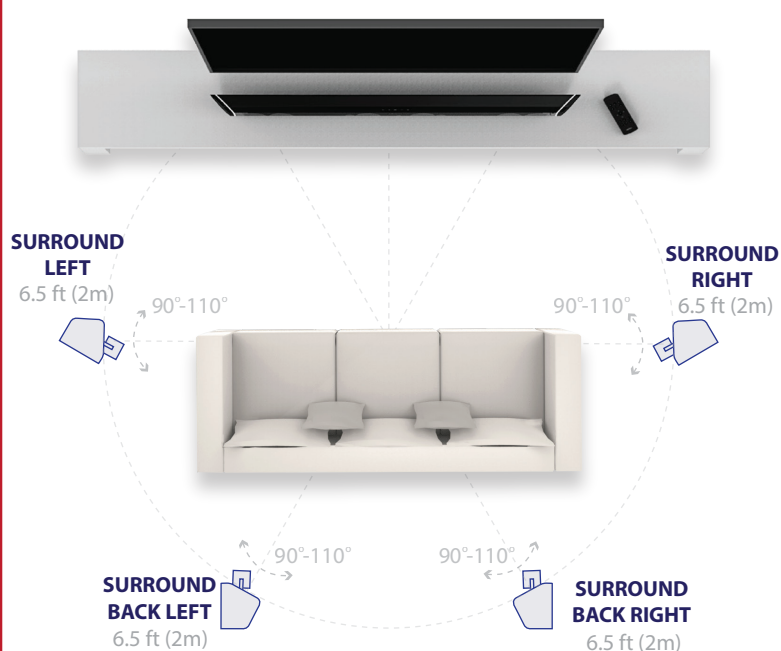
BETTER

ATTACHED: DIPOLE SETUP



BEST

DETACHED: 9.2Ch SETUP



Note:

Illustration is not to scale. Speaker stands are not included.

Dipole Setup: Surround speaker drivers should be at ear level and pointed away from the listener's sitting area.

9.2 Setup: Surround speaker drivers should be at ear level and pointed right at the listener's sitting area.

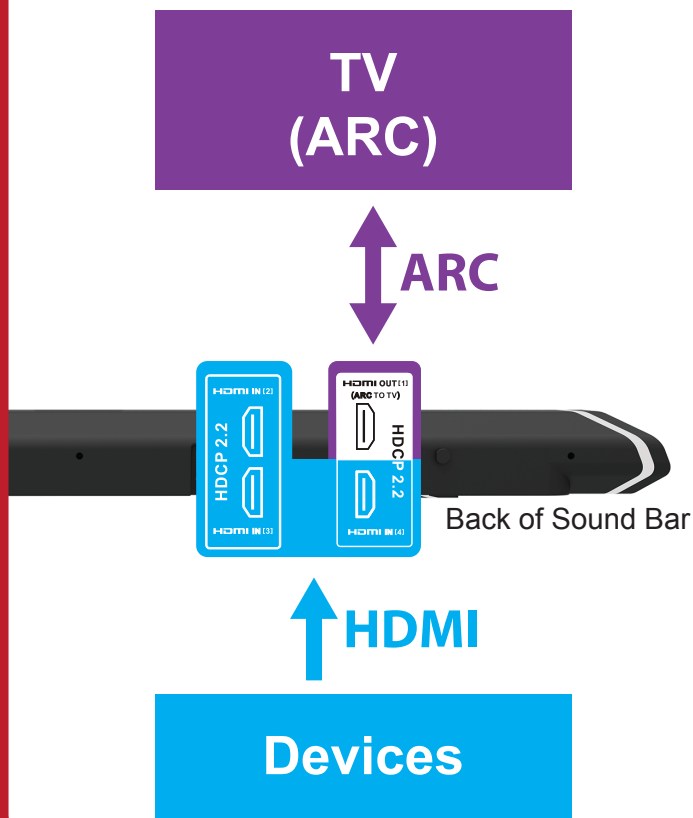
2. Connecting with a TV and other devices

Is the HDMI IN jack on your TV labeled ARC?

YES

Connect source devices such as a Blu-ray Disc player, cable box, or satellite box to any of the HDMI IN jacks (HDMI 2/3/4) on the Sound Bar. If source devices are currently connected to a TV, disconnect them from the TV and connect them directly to the Soundbar to get the highest quality surround sound of Dolby Audio, DTS-HD Master Audio and DTS-X.

TV HDMI ARC Connection to Soundbar.

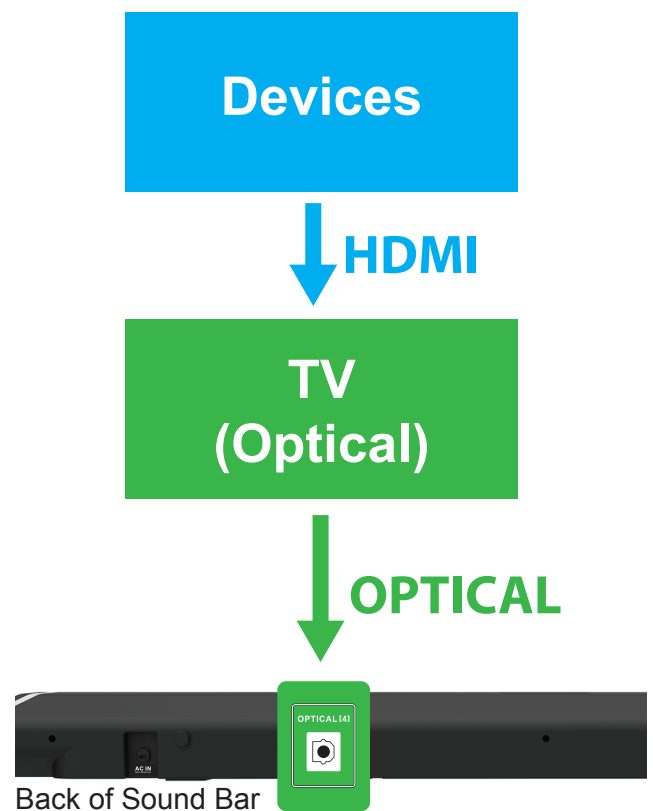


NO

If the TV is not compatible with HDMI ARC, connect the TV's OPTICAL OUTPUT jack to the Sound Bar's OPTICAL INPUT.

Note :

Make sure that the cables are firmly inserted.

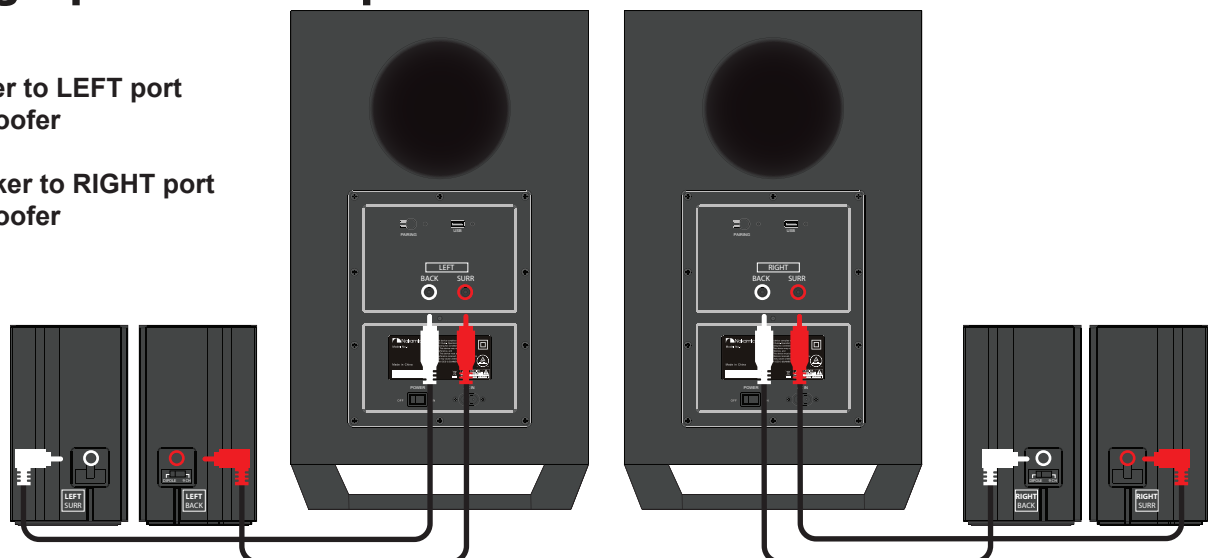


3. Setting up satellite speakers to the subwoofer

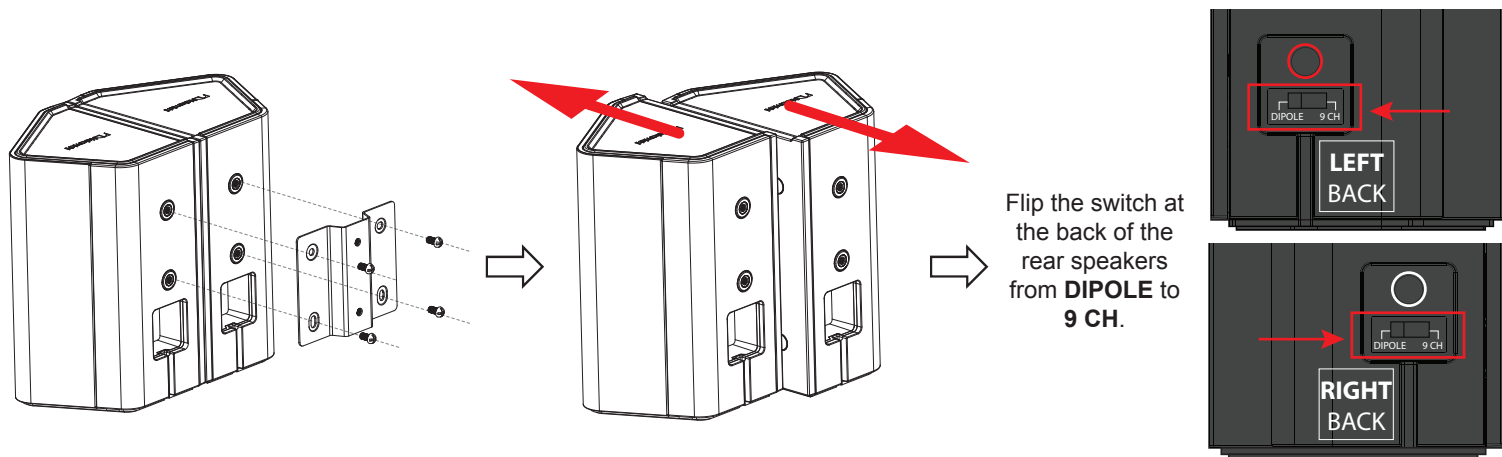
Connect:

LEFT Speaker to LEFT port
on the subwoofer

RIGHT Speaker to RIGHT port
on the subwoofer

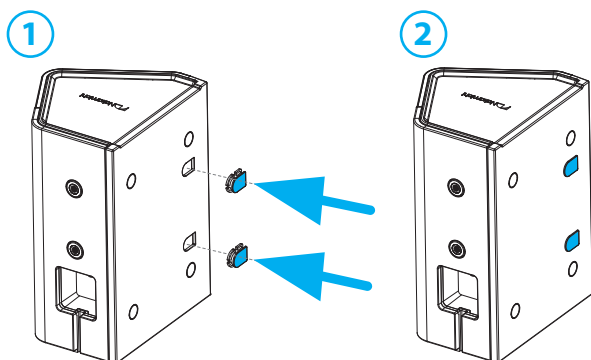


4. Detaching the speakers for 9.2 setup



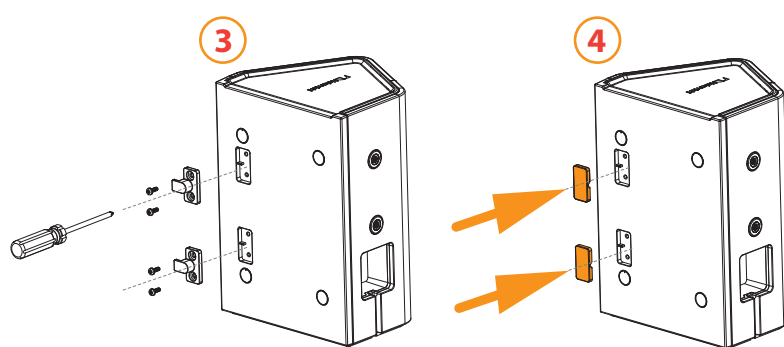
LEFT SPEAKER

Place the rubber stoppers into the slots.

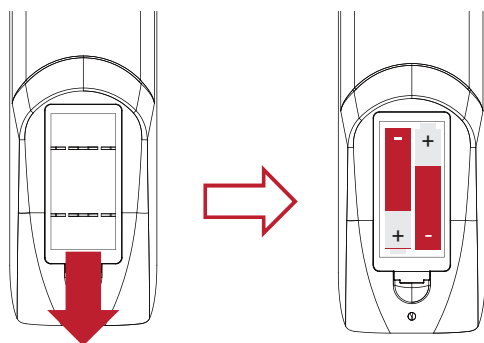


RIGHT SPEAKER

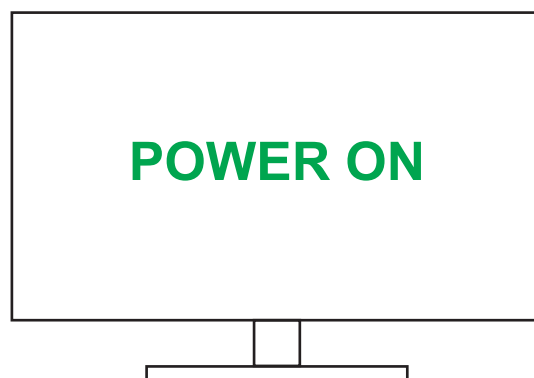
Unscrew the catch and place the rubber stoppers into the slots.



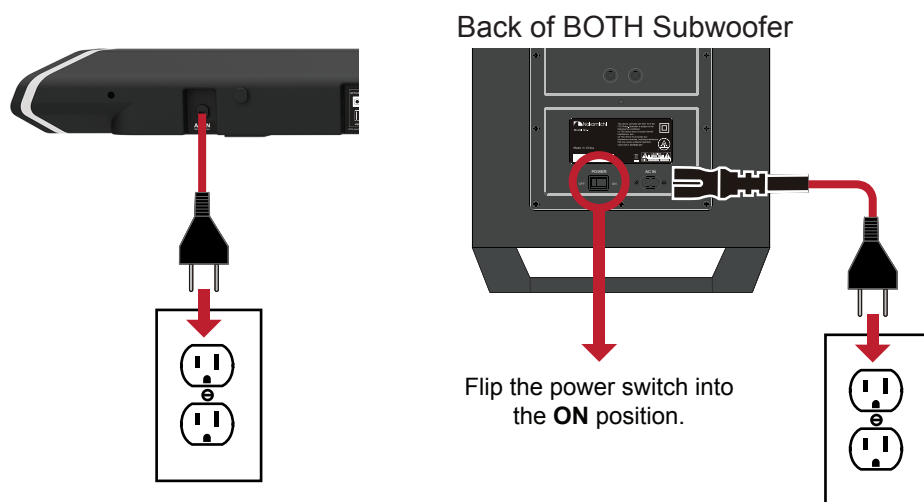
5. Setting up the remote control



6. Turn on the TV

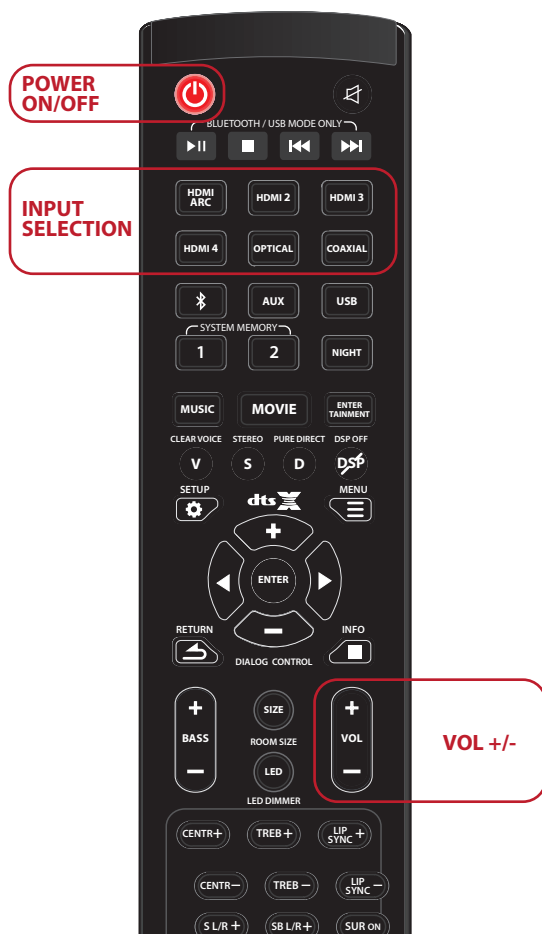


7. Turning on the Shockwave Ultra 9.2



- (1) Connect the AC power cords of the soundbar and wireless subwoofers.
- (2) Press (power) on the remote control of the sound bar.
- (3) The front panel display lights up.
- (4) Confirm that the power indicator of the subwoofer is lit in BLUE LED.
- (5) Turn on the source device.

8. Listening to your soundbar system



To listen to the audio of the TV

Select the desired program using the remote control of the TV.

(1) The screen switches to the television programming and the TV audio is output to the Sound Bar.

(2) If there is no sound, press HDMI ARC on the remote control of the Sound Bar until “ARC” appears in the front LED Display panel.

To enjoy an input device other than the TV

Select the HDMI input or Digital (Optical/Coaxial) input using the Sound Bar remote control.

(1) The Sound Bar will change input according to your selection. Input selection will appear in the front LED Display panel

Adjust the volume

(1) Adjust the volume by pressing Vol +/- on the remote control of the Sound Bar.

(2) Adjust the volume of the subwoofer by pressing Bass +/- on the remote control of the Soundbar.

(3) For details on the EQs adjustment, refer to “Accessing EQs on your Remote pg. 28” in the User Manual (separate document).

Note:

When using HDMI 2/3/4 via HDMI ARC to your TV, make sure that the TV’s source is switch to the HDMI ARC.

Setup completed! Enjoy!

Troubleshooting:

For comprehensive troubleshooting guide, visit <https://www.helpdesk.nakamichi-usa.com/>

No TV sound is output from the system, or no picture is displayed on the TV.

- Press HDMI ARC on the remote control of the Sound Bar until “ARC” appears in the front panel display on the Sound Bar.
- Make sure that the input and output of the HDMI jacks on the Sound Bar are correct.
- Disconnect the cables that are connected between the TV and the Sound Bar, then connect them firmly again. Disconnect the AC power cords of the TV and the Sound Bar from the AC outlets (mains), then connect them again.
- Depending on the order in which you turn on the TV and the Sound Bar, the Sound Bar may enter muting mode and “Mute” may appear in the front panel display. In this case, turn on the TV first, then the Sound Bar.
- When the TV and the Sound Bar are connected via an HDMI cable, enable the HDMI-CEC control for HDMI function on the TV. For details on the TV’s settings, refer to the operating instructions supplied with the TV. For more information about the Sound Bar HDMI-CEC control for HDMI function, refer to the User Manual - Advance Setup: HDMI pg. 17 (separate document).
- Check the sound setting of the TV. When the TV is connected to the Sound Bar, change the audio setting on the TV to external speakers.

No picture or sound from the device connected to the system is output.

- Press input source on the remote control of the Sound Bar until the input connecting the desired device appears on the front panel display of the Sound Bar.
- Make sure that the input and output of the HDMI jacks on the Sound Bar are correct.
- Disconnect the cables connected to the system, and then connect them again. Make sure that the cables are firmly inserted.
- No sound or only a very low-level sound is heard from the subwoofer.
- Press Vol +/- on the remote control of the Sound Bar to increase the volume.
- If experiencing any audio cuts or static, check your audio format and make sure that it is set to BITSTREAM not PCM. Refer to www.helpdesk.nakamichi-usa.com/audio-settings

If the problem is not solved even though you have tried the measures above, refer to “Help & Troubleshooting, pg. 37” in the User manual (separate document).

STOP

PLEASE DO NOT
RETURN THIS UNIT

24HRS
OR LESS

RESPONSE TIME
GUARANTEED

Talk to a SHOCKWAVE sound bar specialist

support@nakamichi-usa.com

Web support: www.nakamichi-usa.com/faq Phone Support: (415) 805 6913 (Mon - Fri 10am - 7pm PST)